



# Kaukonahua Solar + Sheep Farm

*July 26, 2023*

# Agenda

3. Welcome & Introductions

4. Commitment to North Shore

5. Community-Based Renewable Energy

7. Who Qualifies?

10. Community Benefits

11. Villa Rose/Waialua Fresh

13. Agriculture Report

14. Oahu Grazers

15. Kaukonahua Solar & Sheep Farm

16. Site Lines

17. Next Steps and Q & A

# Introductions – Kaukonahua Solar + Sheep Farm Team

nexamp



Co-Developer

**Kaukonahua Solar**



Villa Rose/Waiālua Fresh  
Land Owner/Lessor

**Sheep Operations**

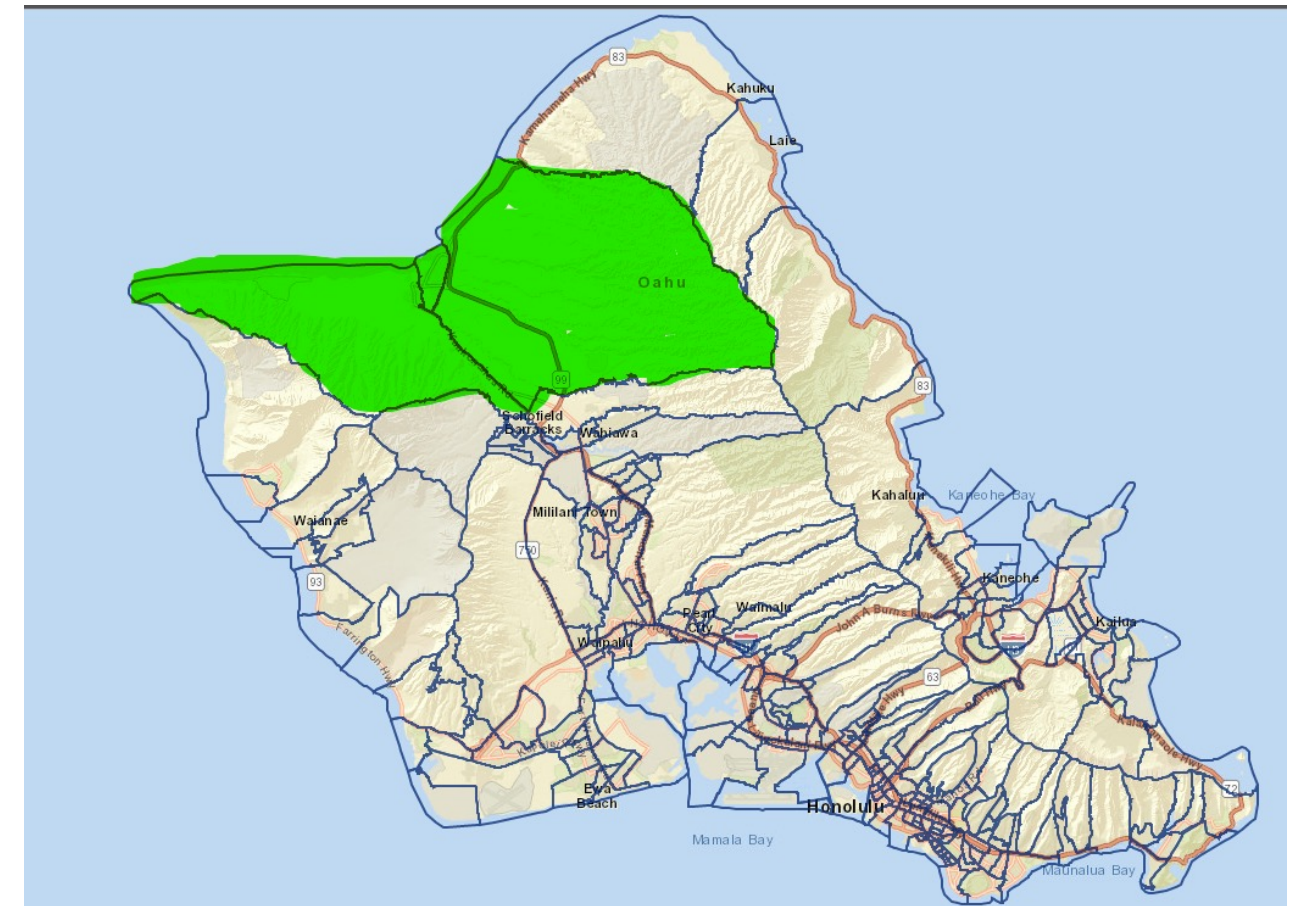
Oahu Grazers

**Consultants**

HI Entheos  
Pacific Catalyst  
Plasch Econ Pacific

# Commitment to North Shore Communities

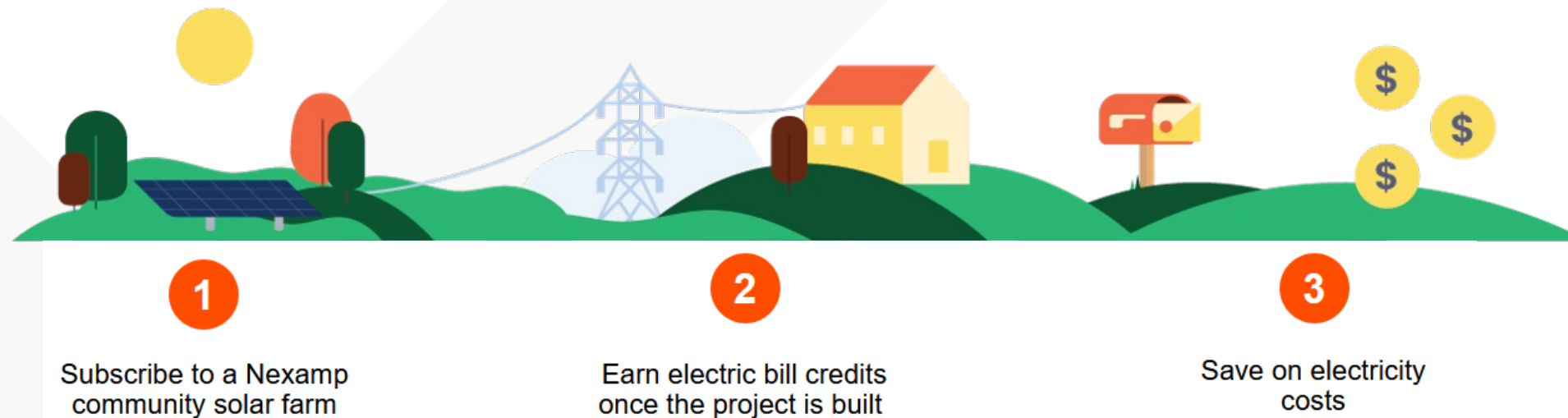
- We heard concern in the first community meeting that subscriptions would go too fast and local residents will miss out
- We'll devote the first three months of subscription outreach only to the census tracts around the project (green)
- We will ensure folks are notified when we start seeking subscriptions: ads, mailers, fliers, etc.
- We also heard in the last meeting we should consider holding the community meetings during the middle of the week, so we moved this meeting from July 28 to July 26



# | What is Community-Based Renewable Energy (CBRE)?

- Act 100 of Hawaii State Legislature directed the Hawaii Public Utilities Commission (PUC) to establish a “community-based renewable energy” tariff (Section 269-27.4, Hawaii Revised Statutes).
- The stated intent of the program is **to make the benefits of renewable energy generation more accessible to a greater number of Hawaii residents** and businesses who would otherwise be unable to directly participate in renewable energy generation for reasons such as:
  - Lack of up-front capital for their own renewable energy system
  - Building or home location, which may not receive enough sunlight or may be located on a saturated circuit
  - Building type or roof design that may not be able to physically support the solar panels
  - Proximity or other limited access to the utility grid
  - Property ownership status (e.g., renters, lessees).

# How Community-Based Renewable Energy Works



- ✓ Subscribers will enter a “Subscriber Agreement” with Kaukonahua Solar
- ✓ Kaukonahua Solar will sell the kWh generated to Hawaiian Electric
- ✓ Subscribers will receive a credit from Hawaiian Electric based on their share of Kaukonahua Solar - deducted from monthly utility bill
- ✓ Discount up to 15%
- ✓ No upfront costs
- ✓ No long-term commitment
- ✓ No credit check or FICO score requirement

# Who Qualifies as ‘Low to Moderate Income’?

A household can self-attest to earning less than or equal to the following income limits for a low-to-moderate income household, as defined by the U.S. Department of Housing and Urban Development. To qualify, a household’s income must be equal to or less than the income limit established by HUD for the customer’s household size in the appropriate county.

Honolulu County (all of Oahu):

|                        | Household Size |       |       |        |        |        |        |        |
|------------------------|----------------|-------|-------|--------|--------|--------|--------|--------|
| Urban Honolulu, HI MSA | 1              | 2     | 3     | 4      | 5      | 6      | 7      | 8      |
| LOW INCOME             | 73150          | 83600 | 94050 | 104500 | 112900 | 121250 | 129600 | 137950 |

# Who Qualifies to Subscribe?

Any resident participating in any of the following programs:

1. Low Income Home Energy Assistance Program (LIHEAP);
2. Supplemental Nutrition Assistance Program (SNAP)
3. Housing Choice Voucher Program (Section 8);
4. Hawaii MedQuest Program;
5. Weatherization Assistance Program (WAP);
6. Lifeline Support for Affordable Communications (Federal);
7. Lifeline Support for Affordable Communications (State)
8. Child Care Connection Hawaii;
9. Preschool Open Doors;
10. National School Lunch Program (NSLP);



# Who Qualifies to Subscribe?

Any resident participating in any of the following programs:

11. Community Eligibility Provision (CEP) of the NSLP;
12. Hawaii Head Start;
13. Early Head Start; n. Supplemental Security Income (SSI);
14. Children's Health Insurance Program (CHIP);
15. Women, Infants and Children (WIC);
16. Temporary Assistance for Needy Families (TANF);
17. Temporary Assistance for Other Needy Families (TAONF);
18. Hawaii Energy Affordability and Accessibility Program;
19. Spectrum Internet Assist Program u. Hawaiian Telcom Internet Kokua Program
20. Any verified government (Hawaii State or Federal) program providing services to LMI persons or households;
21. Any verified government (Hawaii State or Federal) or Hawaii non-profit program serving Asset Income Constrained Employed (ALICE)<sup>7</sup> persons or households;

# Kaukonahua Solar + Sheep Farm Community Benefits

- Supplemental financial support to egg farm construction and operations
- Increases local food production
- Dual-use approach within project footprint preserves agricultural use of the land
- Job creation (including local labor and prevailing wage commitments)
- Educational and job-training opportunities
- **Provides clean energy at guaranteed savings to qualifying subscribers**



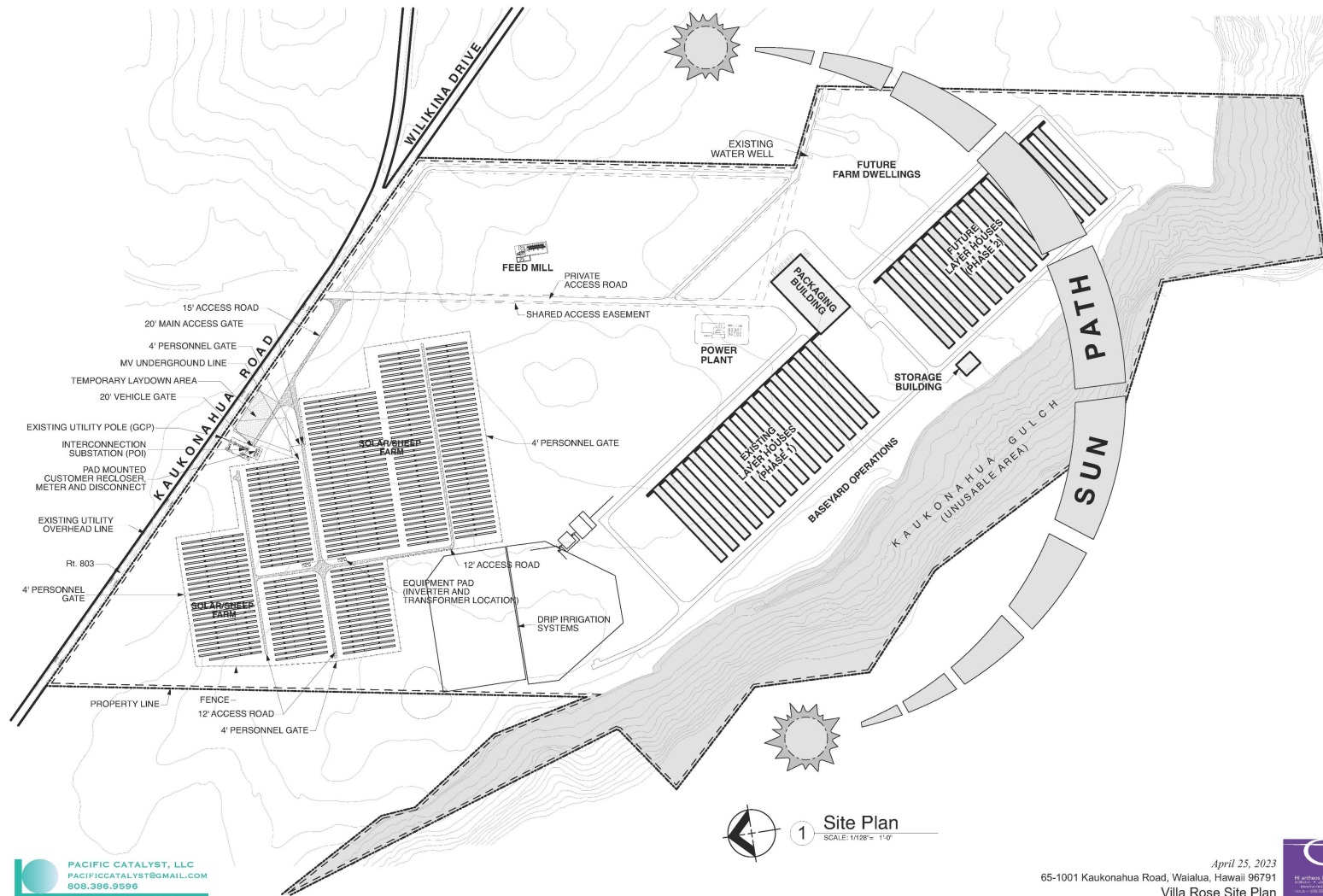
# Villa Rose / Waialua Fresh

- Main goal is to help Hawaii rely less on egg imports (with an aim to displace the 90% share of mainland eggs sold in Hawaii).
- Investment to date \$70MM
- Currently have 200,000 laying hens, with the potential to house 1 million birds
- Currently employs 60 people



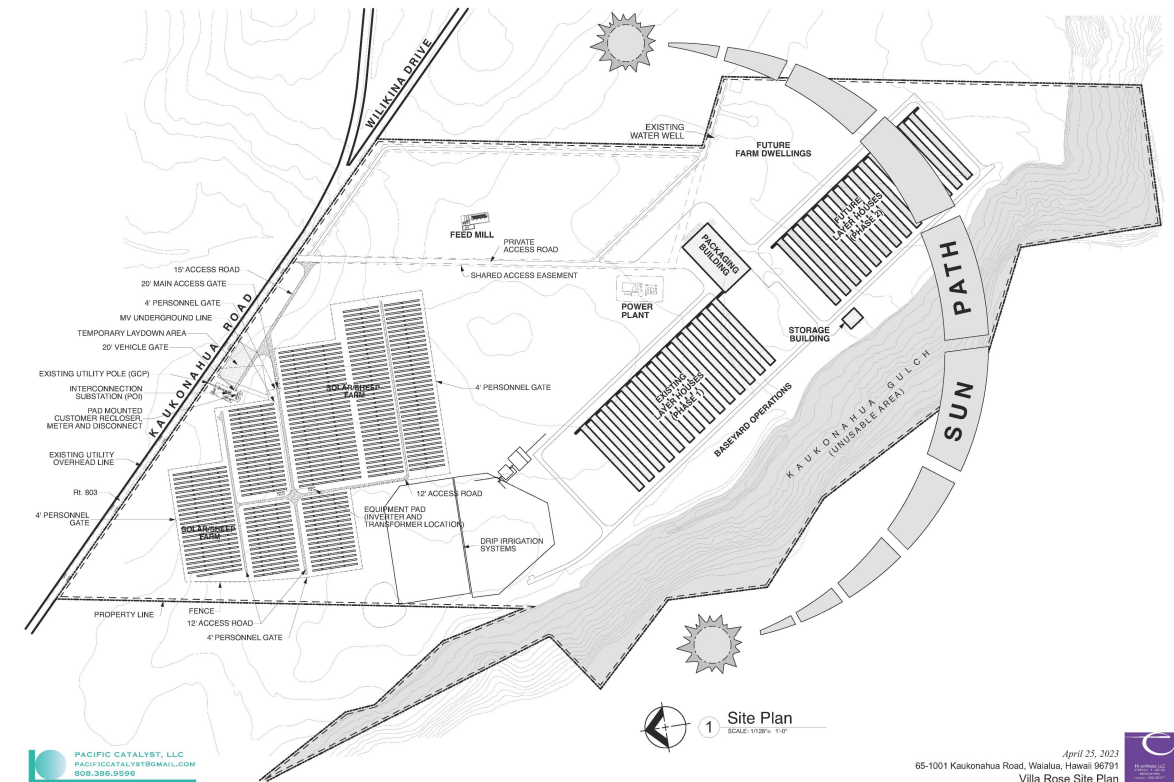
# Villa Rose / Waialua Fresh

- Villa Rose is committed to helping provide renewable energy options to the local community.



# Agriculture Report

- The project will occupy 60 acres within the 318 acres owned by Villa Rose LLC d/b/a Waialua Egg Farm.
- Only livestock grazing would be compatible with Waialua Egg Farm because of the biosecurity risks to the chickens.
- For the foreseeable future, the highest and best use of the project site - as well as other Villa Rose agricultural lands not used for the egg farm - will be livestock grazing.
- At the end of the easement term, the land will be preserved for future agricultural uses and will **not** be lost to development.



# Oahu Grazers

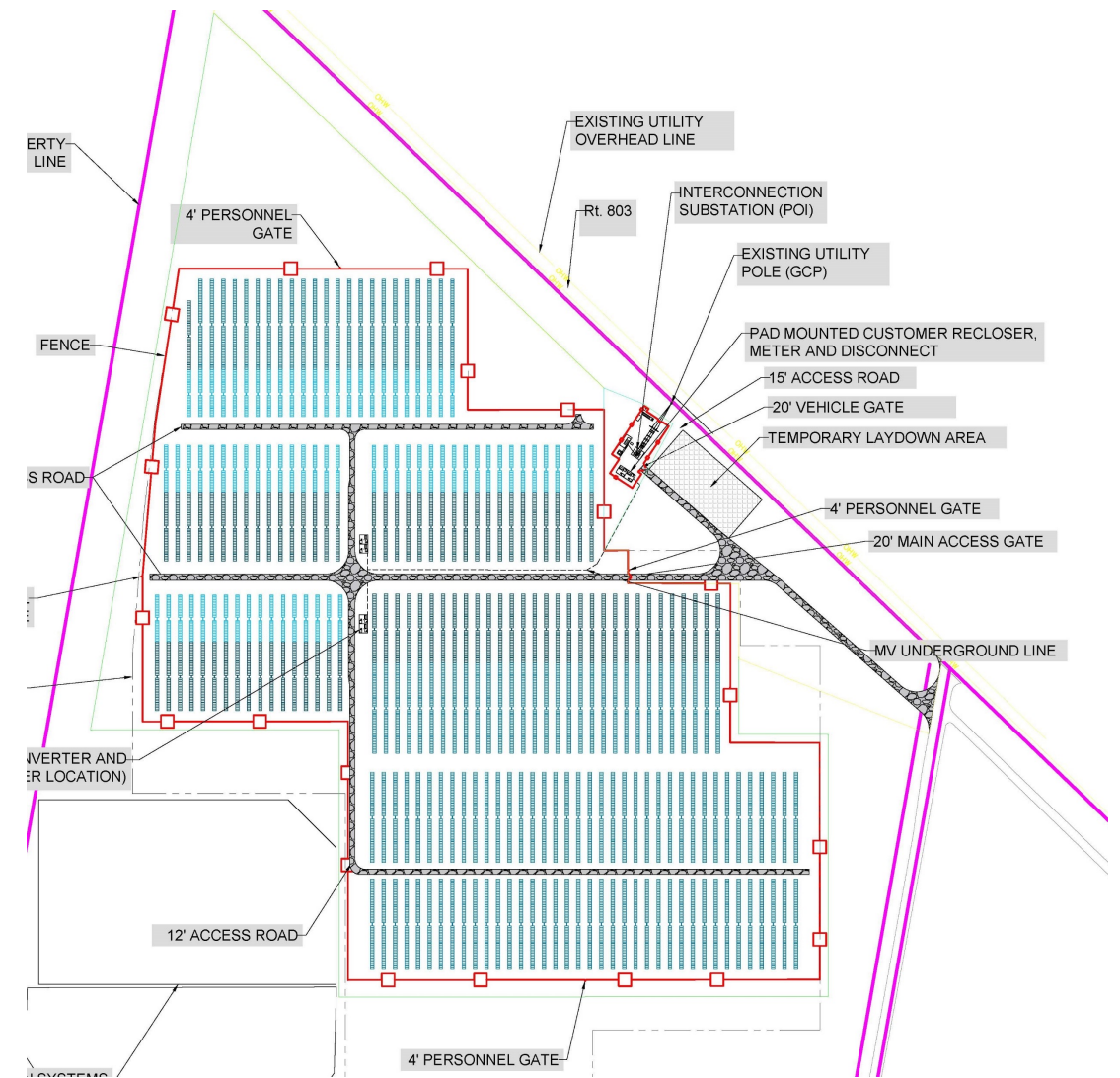
- Kaukonahua Solar will partner with Oahu Grazers for sheep grazing services.



## Kaukonahua Solar + Sheep Farm

Located at Villa Rose Egg Farm  
65-1001 Kaukonahua Road, Waialua

- Dual-use solar and agriculture project
- 60-acre easement on 318 acre parcel
- 51-acre Project Area, 9 acres of shared easements for access, utility use and grazing areas
- Project Area (51 acres)
  - 41 acres fenced
  - Out of the 41 acres, 30+ acres will be available for grazing inside of the fence



# Kaukonahua Solar + Sheep Farm – Site Lines

- Bordered on west, north and east sides by earthen berms 6-8' tall, topped by wild grasses 2-3' tall (8-11' total height)
- Designed to minimize panel height (Max 10')





# Next Steps and Q & A

- Permitting and Utility Commission Review – Through Fall 2024
- Interconnection Review – Through Nov 2024
- Construction/Commissioning – Nov 2024 through Nov 2025
- Subscription Outreach – Starting late 2024
- Please submit written comments to: [kaukonahuasolar@nexamp.com](mailto:kaukonahuasolar@nexamp.com)
- Next project update meeting dates: 12/18/2023

Questions?

Thank You.



**Ethan Gyles, VP**

[egyles@nexamp.com](mailto:egyles@nexamp.com)



**Jeremy Chapman, Partner**

[jchapman@melinksolardevelopment.com](mailto:jchapman@melinksolardevelopment.com)